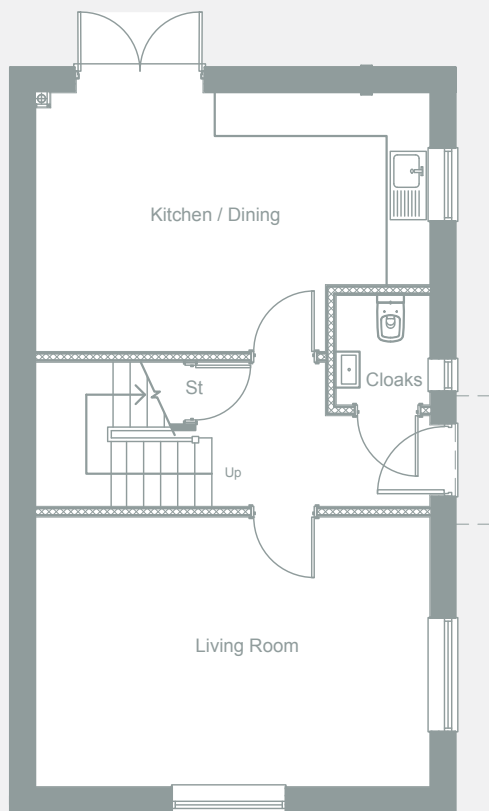


The Draycote

3 bedroom
semi-detached house

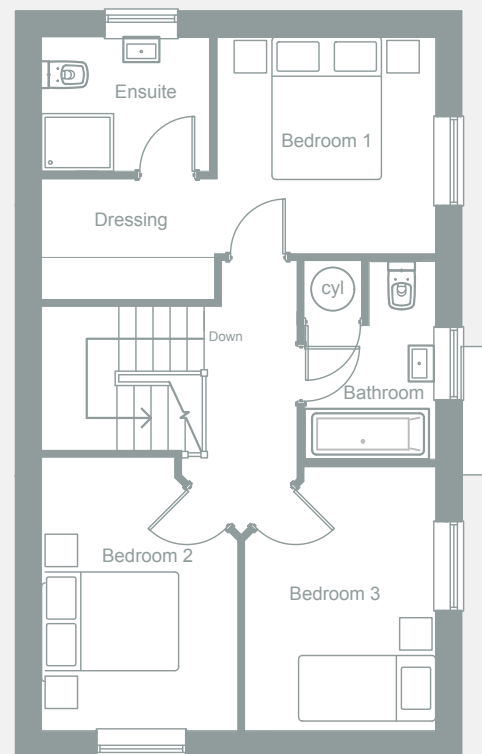
WILLIAMS
HOMES





Ground Floor

Living Room	5500	x	3775	18'1	x	12'5
Kitchen / Diner	5500	x	3675	18'1	x	12'1
Cloaks	1570	x	1350	5'2	x	4'5



First Floor

Bedroom 1	3050	x	3025	10'0	x	9'11
Bedroom 1 (dressing area)	2350	x	1800	7'9	x	5'11
En-suite	2350	x	1875	7'9	x	6'2
Bedroom 2	3775	x	2750	12'5	x	9'0
Bedroom 3	3675	x	2675	12'1	x	8'9
Bathroom	2725	x	1825	8'11	x	6'0

The Draycote

A wonderful 3 bedroom semi-detached home with spacious kitchen, dining room, an impressive lounge and family sized bathroom and ensuite with luxury fittings.

Plot 7 & 13

Williams Homes,
33 Leicester Road,
Anstey, Leicester,
LE7 7AT.

Telephone: **0116 235 2221**
Email: sales@williamshomes.co.uk
www.williamshomes.co.uk

This is an artistic interpretation, therefore variations in finishes and exact layout may not be accurate. Please ask your Sales Manager for complete specifications. Images are for illustration purposes only. Please be aware that a tolerance of 50mm should be taken into consideration for plasterboard and brickwork. Measurements provided are maximum measurement information for the space.