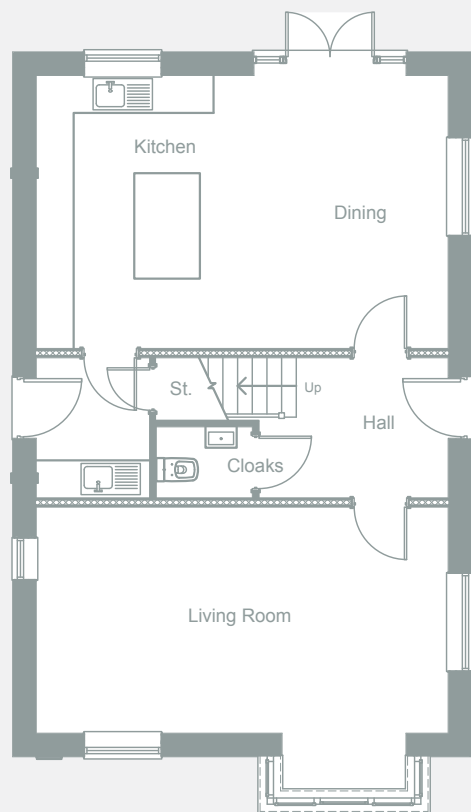


The Cropston (FR)

4 bedroom
detached house
with detached single
garage

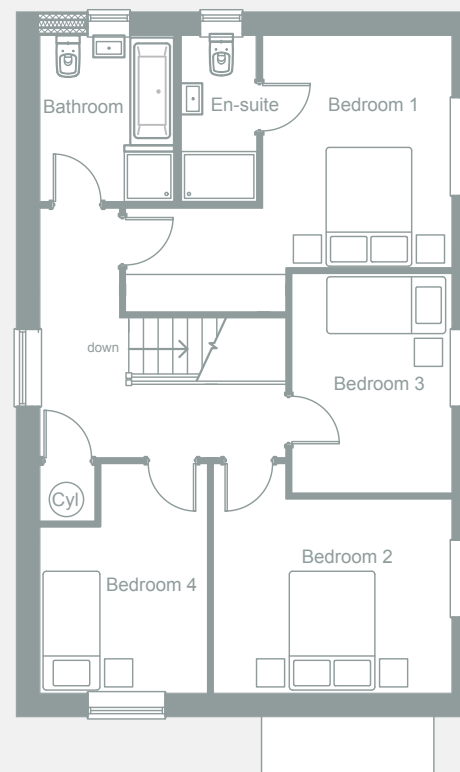
WILLIAMS
HOMES





Ground Floor

Living Room	6600	x	3650	21'8	x	12'0
Kitchen / diner	6600	x	4400	21'8	x	14'5
Utility	2275	x	1825	7'6	x	6'0
Cloaks	1525	x	1140	5'0	x	3'9



First Floor

Bedroom 1	3725	x	3025	12'3	x	9'11
En-suite	2675	x	1175	8'9	x	3'10
Bedroom 2	3825	x	3125	12'7	x	10'3
Bedroom 3	3500	x	2775	11'6	x	9'1
Bedroom 4	3675	x	2700	12'1	x	8'10
Bathroom	2675	x	2155	8'9	x	7'1

The Cropston

A wonderful 4 bedroom detached home with spacious kitchen, dining room, an impressive living room and family sized bathroom and en-suite with luxury fittings.

Plot 3

Williams Homes.
33 Leicester Road,
Anstey, Leicester,
LE7 7AT.

Telephone: **0116 235 2221**
Email: sales@williamshomes.co.uk
www.williamshomes.co.uk

This is an artistic interpretation, therefore variations in finishes and exact layout may not be accurate. Please ask your Sales Manager for complete specifications. Images are for illustration purposes only. Please be aware that a tolerance of 50mm should be taken into consideration for plasterboard and brickwork. Measurements provided are maximum measurement information for the space.