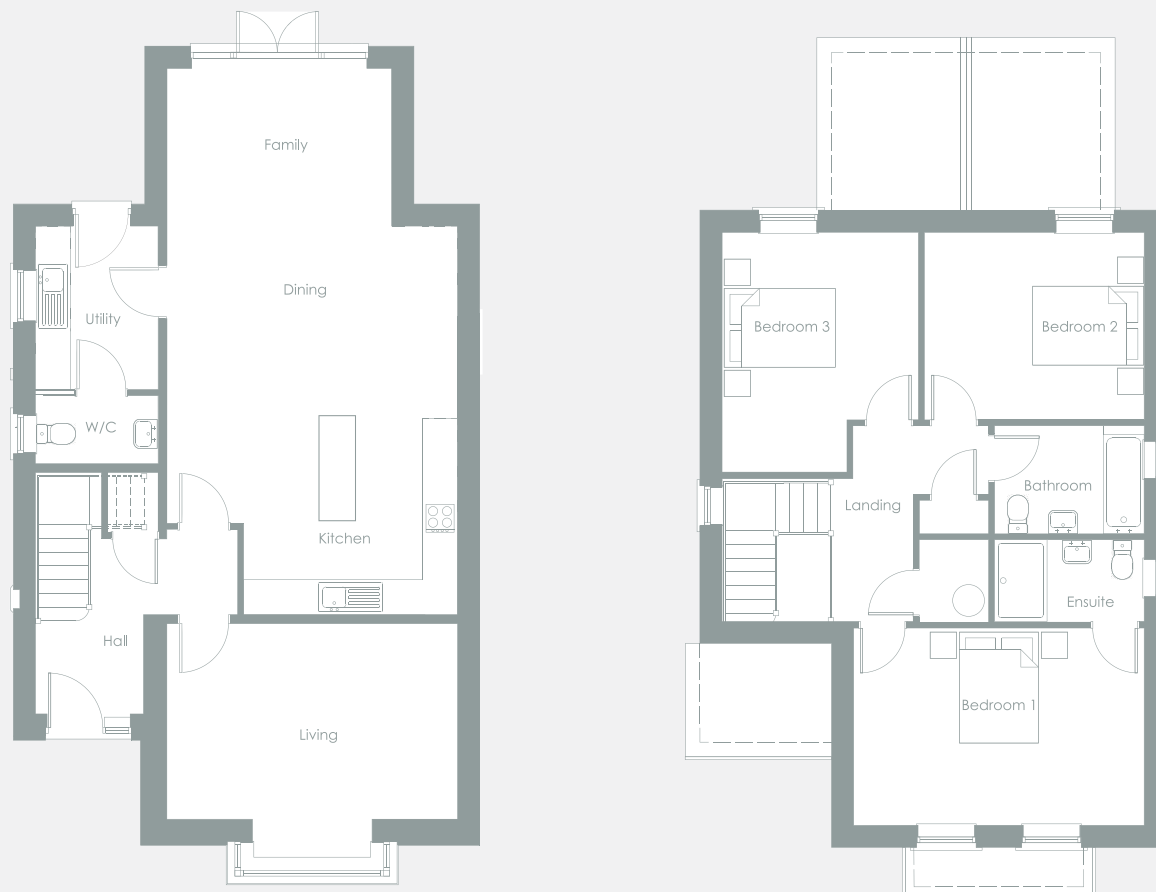


## The Cropwell

3 Bedroom Detached  
Home With Detached  
Single Garage

**WILLIAMS**  
HOMES





### The Cropwell

A wonderful 3 bedroom detached home with spacious kitchen, dining room, an impressive lounge and family sized bathroom and en-suite with luxury fittings.

### Plot 6 & Plot 5 (Handed)

#### Ground Floor

<b>Family</b>	3875	x	2700	12'8	x	8'10
<b>Kitchen / diner</b>	6700	x	5000	21'11	x	16'4
<b>Lounge</b>	5000	x	4050	16'4	x	13'3
<b>Utility</b>	2800	x	2150	9'2	x	7'0
<b>WC</b>	1200	x	2150	3'11	x	7'0

#### First Floor

<b>Bedroom 1</b>	5000	x	3375	16'4	x	11'0
<b>En-suite</b>	2600	x	1425	8'6	x	4'8
<b>Bedroom 2</b>	3775	x	3225	12'4	x	10'6
<b>Bedroom 3</b>	4100	x	3775	13'5	x	12'4
<b>Bathroom</b>	2575	x	1650	8'5	x	5'5

*This is an artistic interpretation, therefore variations in finishes and exact layout may not be accurate. Please ask your Sales Manager for complete specifications. Images are for illustration purposes only. Please be aware that a tolerance of 50mm should be taken into consideration for plasterboard and brickwork. Measurements provided are maximum measurement information for the space.*

Williams Homes.  
33 Leicester Road,  
Anstey, Leicester,  
LE7 7AT.

Telephone: **0116 235 2221**  
Email: [sales@williamshomes.co.uk](mailto:sales@williamshomes.co.uk)  
[www.williamshomes.co.uk](http://www.williamshomes.co.uk)